

Roadmap for research integration between all ERNs

Introduction

One of the main overall objectives of ERICA is to facilitate the research collaboration between the European Reference Networks (ERNs). ERICA Work Package (WP) 1 main objective is to integrate and align the research activities of ERNs. To this end, a common research roadmap are developed and provided for ERNs with specified collaborative actions and adopted positions.

Most of the important players for ERICA are the ERNs and this project is also closely liaised with European Joint Programme of Rare Diseases (EJP RD) and the goals are aligned with the International Rare Diseases Research Consortium (IRDiRC). ERICA's Strategic Advisory Board composed of leading executives of IRDiRC, EJP RD and other stakeholders advise on the formulation and development of these roadmaps.

The sustainable beyond lifetime aim is to integrate all the ERN research activities efforts of ERICA together with EJP RD and IRDiRC into the new Rare Disease Partnership and into the envisioned European Clinical Research Network, that is currently being developed.

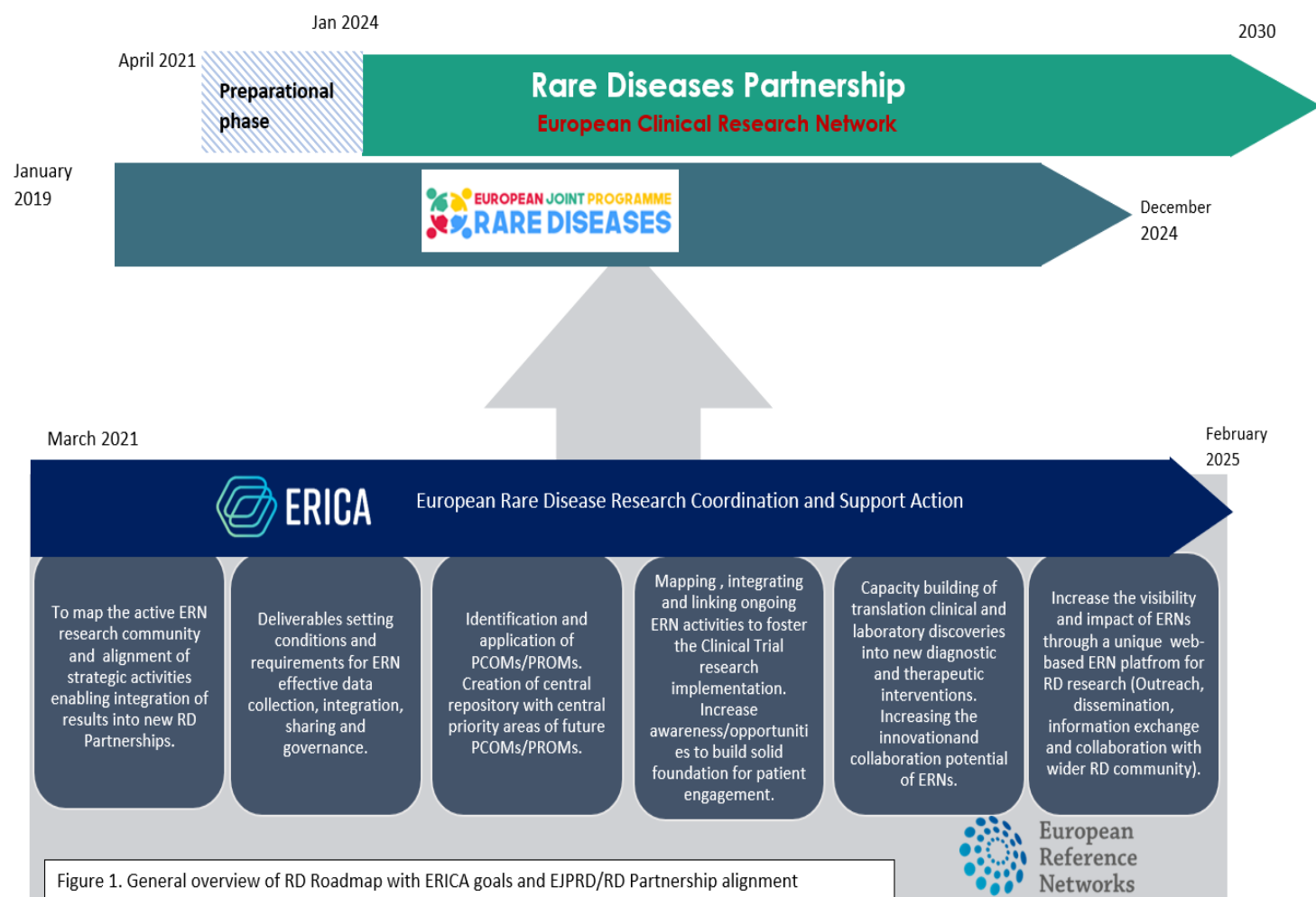
The roadmap will be finetuned and adapted throughout the project if adaptations are required. To guarantee ERICA's sustainability, a roadmap beyond the lifetime of the project will also be developed based on this roadmap.

Integration of ERN research efforts and alignment with the important partnerships are the primary goals of this task and are formulated into the ERICA common research roadmap.

The roadmap is based on the goals and tasks of the specific WPs and the expected outcomes of their activities. The [ERICA Executive Committee](#) formed by the WP leaders, assists in the scientific management of the ERICA and provides regular feedback and updates on their activities and outcomes to ERICA coordinator and to other board members.



The general overview of Rare Diseases (RD) Roadmap with ERICA goals and EJP RD and Rare Disease Partnership alignment is formulated at the Figure 1.



The ERICA roadmap is formulated and aligned with the IRDiRC goals with ERICA's specified collaborative actions and adopted positions with respect to interaction and collaboration with multiple partners in the field of rare diseases. To consolidate the latter [the ERICA Advisory Board](#) composed of leading executives of IRDiRC, EJP RD and other stakeholders advice on the formulation and development of these roadmaps.

At the Figure 2 is depicted the detailed structure of ERICA including collaborators and stakeholders



ERICA European Rare Disease Research Coordination and Support Action

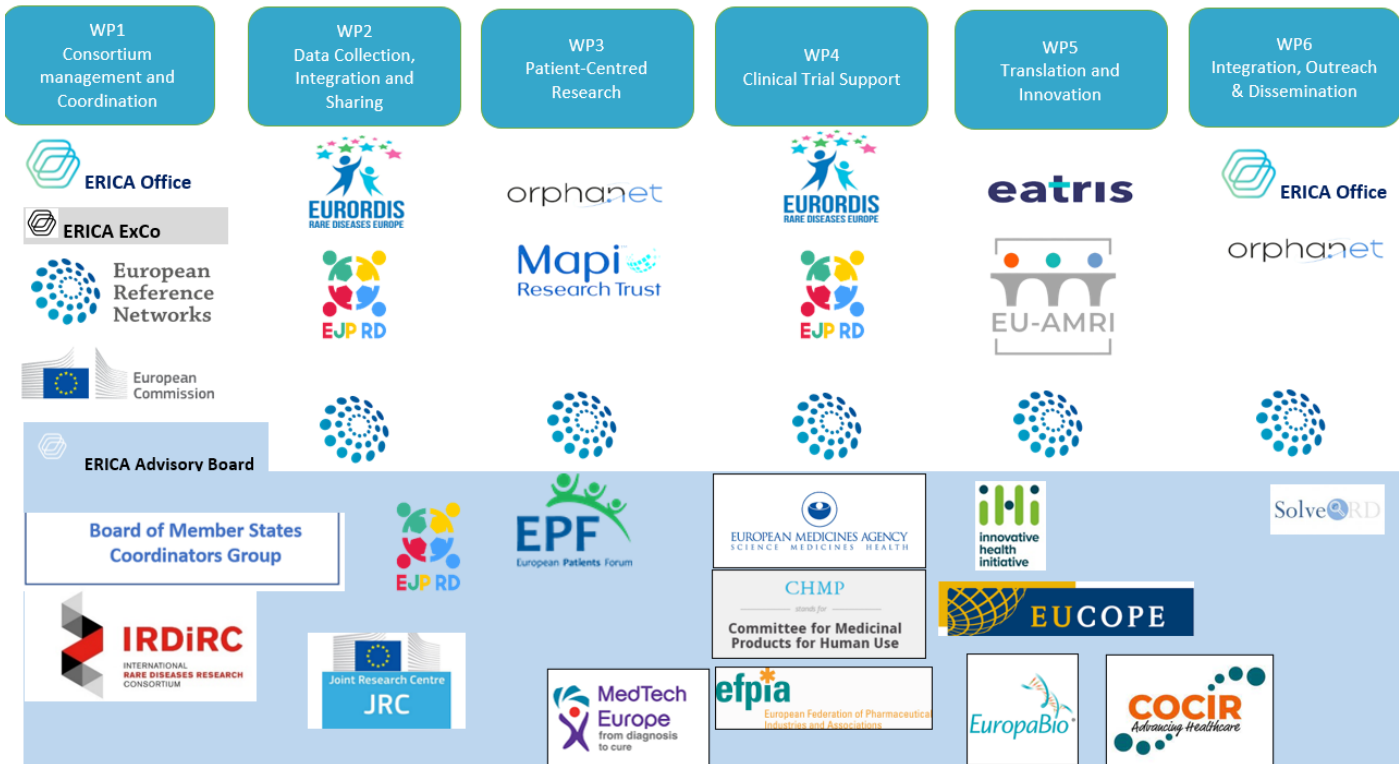


Figure 2. Detailed Structure of ERICA including collaborators and stakeholders

The ERN Research Roadmap is intended to be a living document in which information can be made available on a finer level of granularity through updates as the implementation of the project progresses and when significant changes occur. Based on this roadmap the Roadmap beyond the lifetime of this coordination and support action are developed. The roadmaps will be presented to and endorsed by all ERNs and patient’s representatives.