

# Introduction to the c4c Expert Advice Service

Fenna Mahler

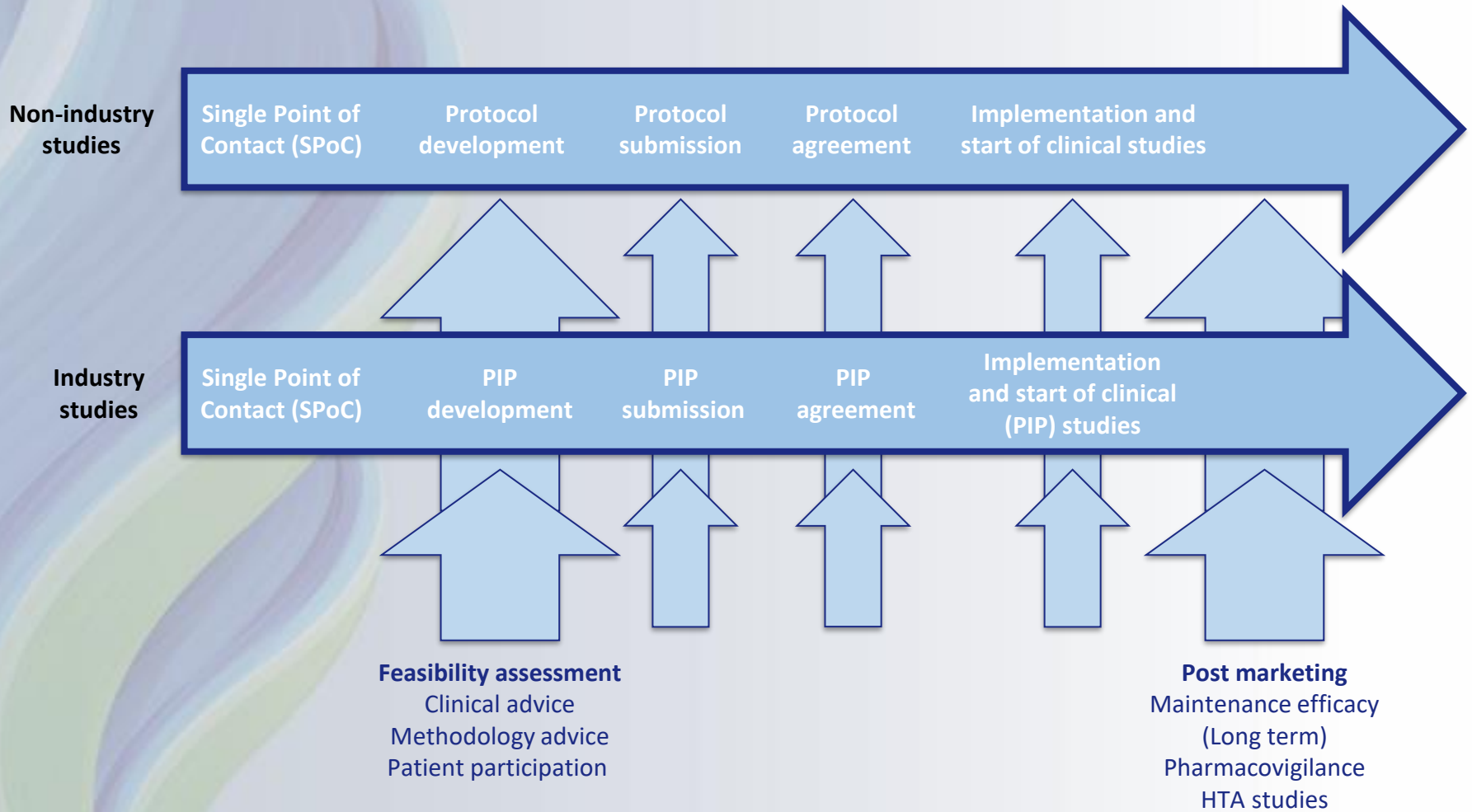
23 of April 2024



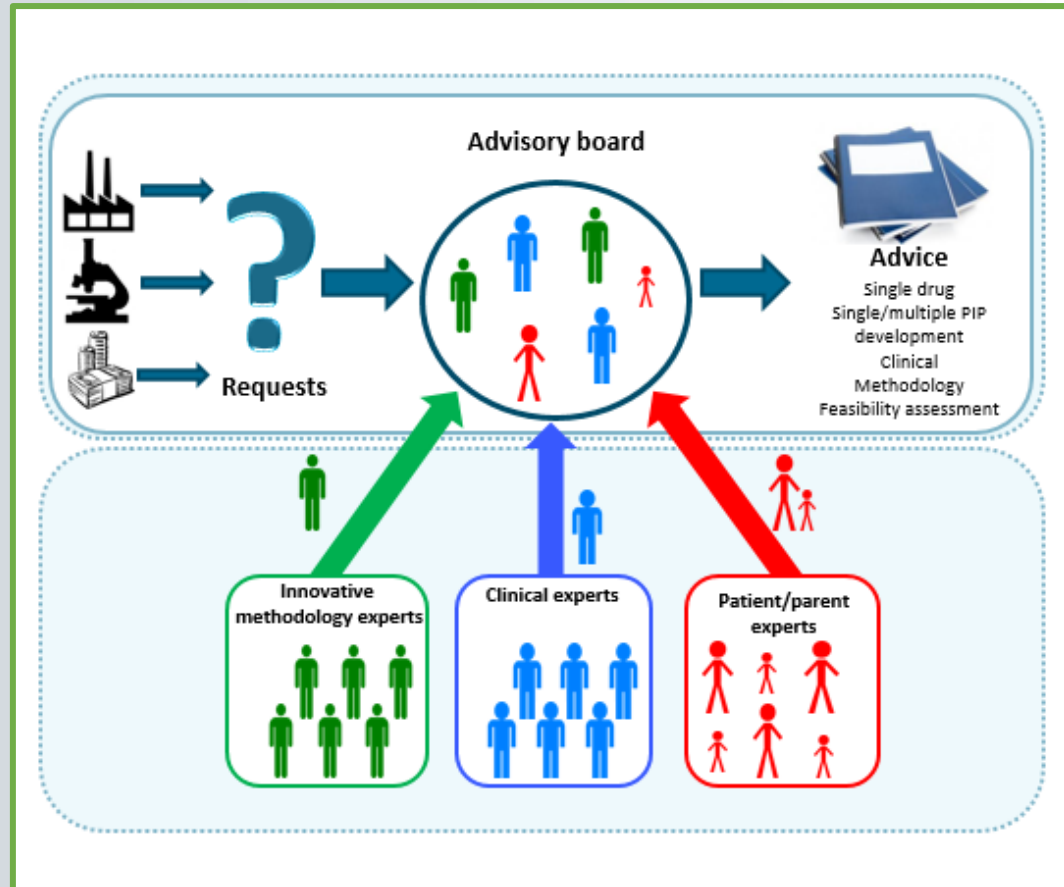
This project has received funding from the Innovative Medicines Initiative 2 Joint Undertaking under grant agreement No 777389. The Joint Undertaking receives support from the European Union's Horizon 2020 research and innovation programme and EFPIA.



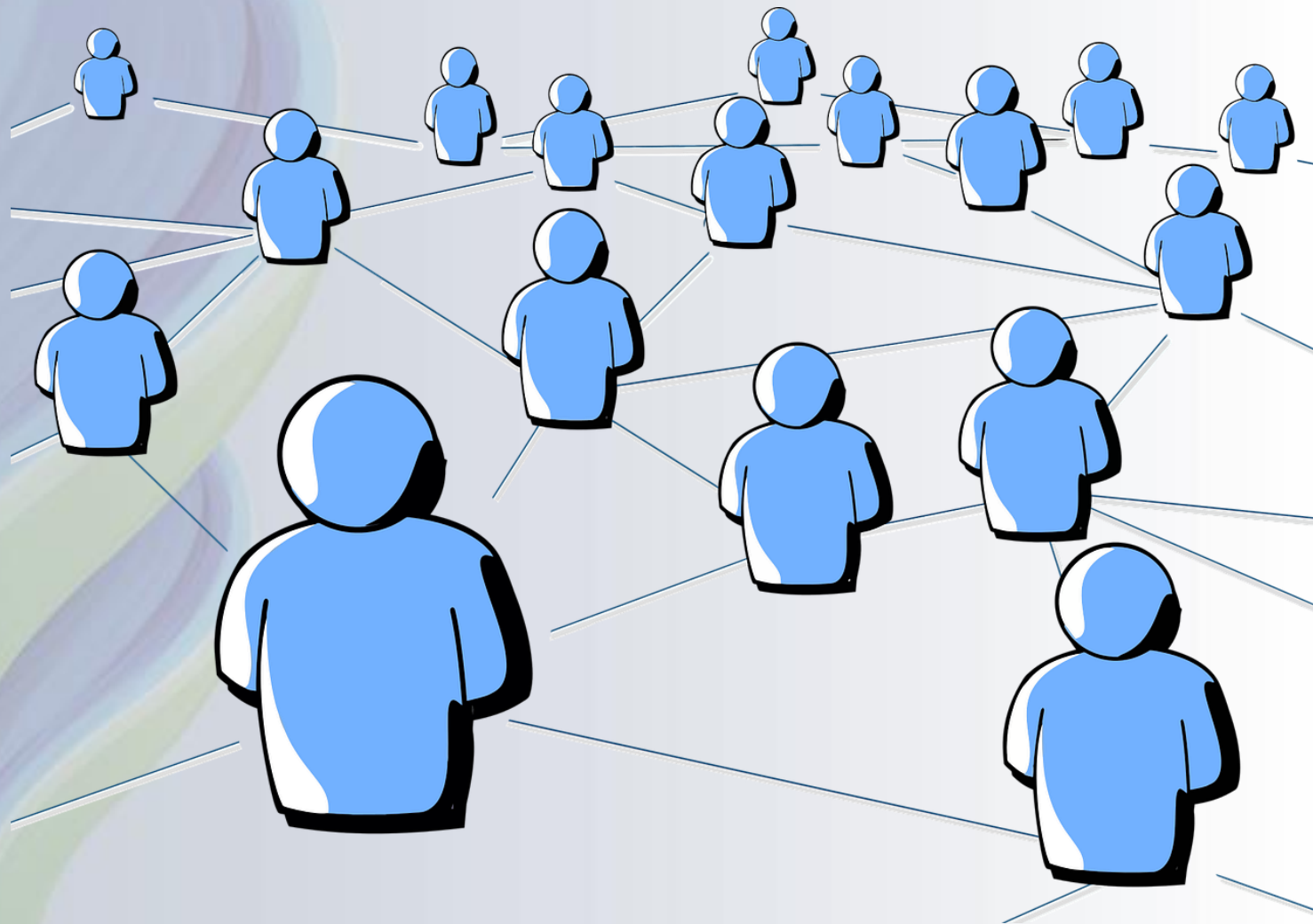
# When to ask for advice?



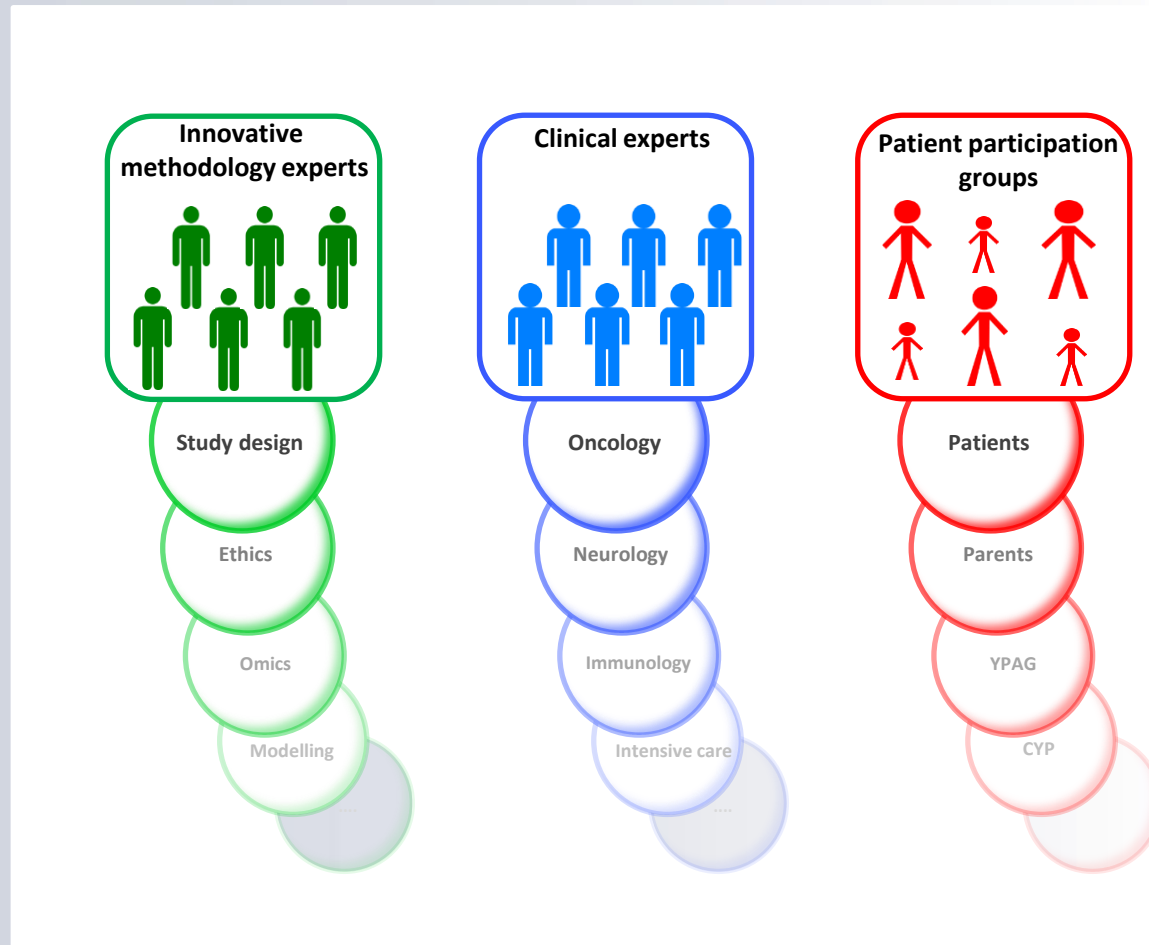
# Expert Advice Process



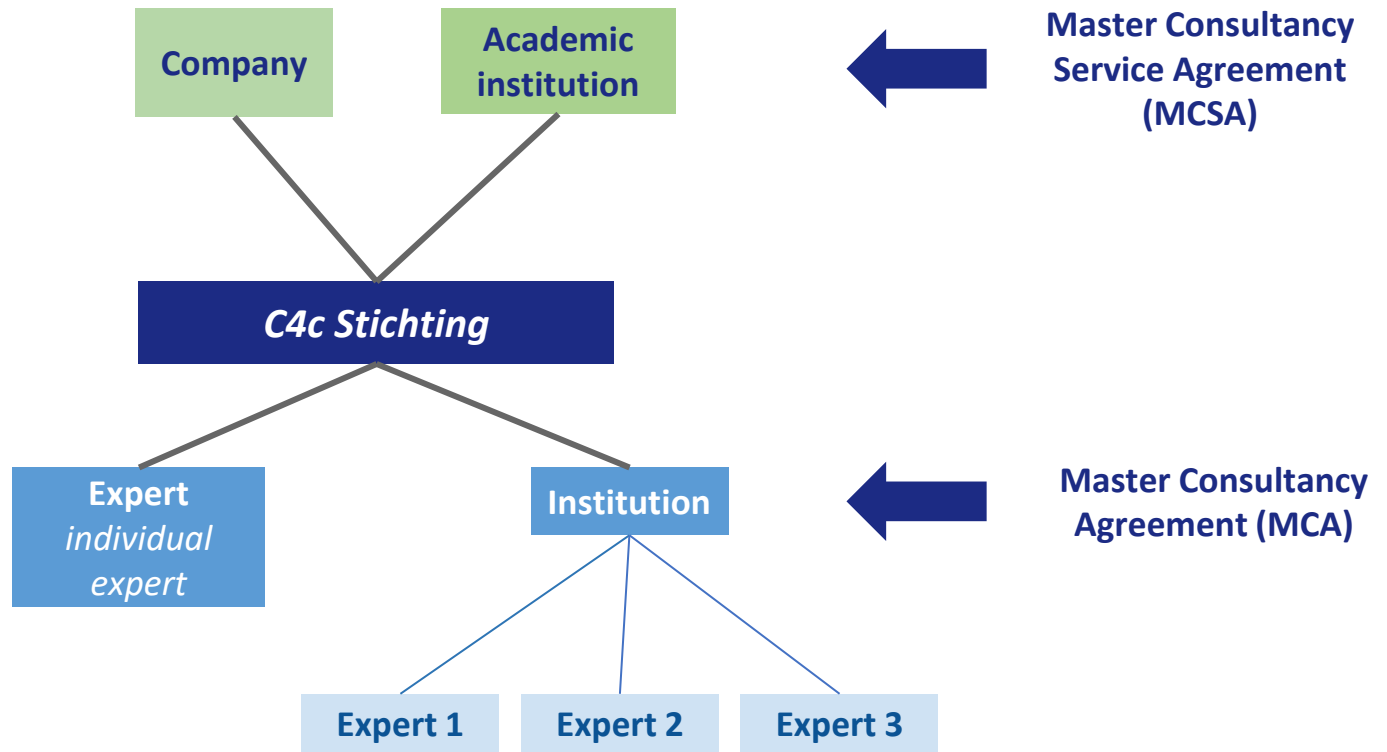
# Network of Experts



# Types of Experts



# Centralized contracting structure



# More efficient process



# Expert Advice in numbers

## Approx. 60 advice requests

(7 industry partners & 8 academic sponsors)



13 did not proceed



42 completed



7 ongoing

Approximately **65%** of the advice requests were **within the area of rare diseases**

( $\leq 1$  person per 2,000 in the European population)



# Feedback

*Centralised contracting structure is efficient*

*Very professional organisation*

*"I really appreciated the opportunity to have the patient voice heard and incorporated into the study design"*

*We were very grateful for the c4c team review of insight documents such as screener/consent and interview questions - c4c was able to provide a "full" paediatric perspective which we had tried to achieve but fallen slightly short of alone.*

*C4c brought us experts not known before*

*The support of the c4c experts was invaluable in seeking these insights to ensure the team understands how best to communicate and serve the peds population within the adult trial.*

# Benefits to the paediatric rare disease community

- **Combined insights** from relevant **specialty networks and methodologists** on study design, implementation and assessment
- **Patients and families** input on acceptability and feasibility
- Logistical support and knowledge of methodologies to **set-up** an advisory board
- Reducing timelines and bureaucracy by the **centralised contracting structure**
- **One stop shop**
- Opportunity for c4c and rare disease community to **collaborate**
- The specific **medical needs of children** at the foreground

# Connect with c4c



[www.conect4children.org](http://www.conect4children.org)

[c4c-S: conect4children.eu](mailto:c4c-S:conect4children.eu)



[c4c.spoc@conect4children.eu](mailto:c4c.spoc@conect4children.eu)



@c4c\_network

